



**SAND CREEK MASSACRE
FOUNDATION**

ANNUAL REPORT



2021

LEARN. REMEMBER. HEAL.

OUR MISSION

The Sand Creek Massacre Foundation supports the educational purposes of the Sand Creek Massacre National Historic Site, including the Center for Sand Creek Massacre Studies. By promoting initiatives to understand the relevance of the Sand Creek Massacre in the contemporary world, the Foundation's efforts honor the legacy of those lost at Sand Creek and assist in minimizing the chances of similar atrocities in the future.

BOARD OF DIRECTORS

The Board of Directors serve one, two, or three-year terms each. The Board consists of experts, Tribal members, and stewards who serve both the Foundation and the National Park Service with pride.

Former Senator Ben Nighthorse Campbell, Honorary Chair
Alexa Roberts, Chair
Conrad Fisher
Chantalle Hanschu
Henrietta Mann
JJ Rutherford
Thomas A. Thomas
Open Northern Arapaho seat
Open Southern Arapaho seat

BOARD OF ADVISORS

The Board of Advisors provides professional and objective advice, recommendations, and networking connections to the Foundation. The Advisors acts as consultants, reviewing ongoing initiatives and contributing expertise and knowledge to the Foundation's Strategic Plan.

JuDee Anderson
Max Bear
Jeff C. Campbell
Cynthia Carey
Cecelia Cometsevah
Tracy Coppola
Larry Crowder
Philip Deloria
Dawn DiPrince
Loren Ghiglione
Todd Hennessy
Ernest House, Jr.
Karl Jacoby
Ari Kelman
Karl Kumli
Richard Littlebear
Benjamin Madley
Derek Okubo
Ryan Ortiz
Karen Returns To War
Gary Roberts
Elleni Sclavenitis
Darius Smith
Tink Tinker
William Walksalong
Elliott West
Karen Wilde
Karl Zimmermann

PARTNERS



**SAND CREEK MASSACRE
FOUNDATION**

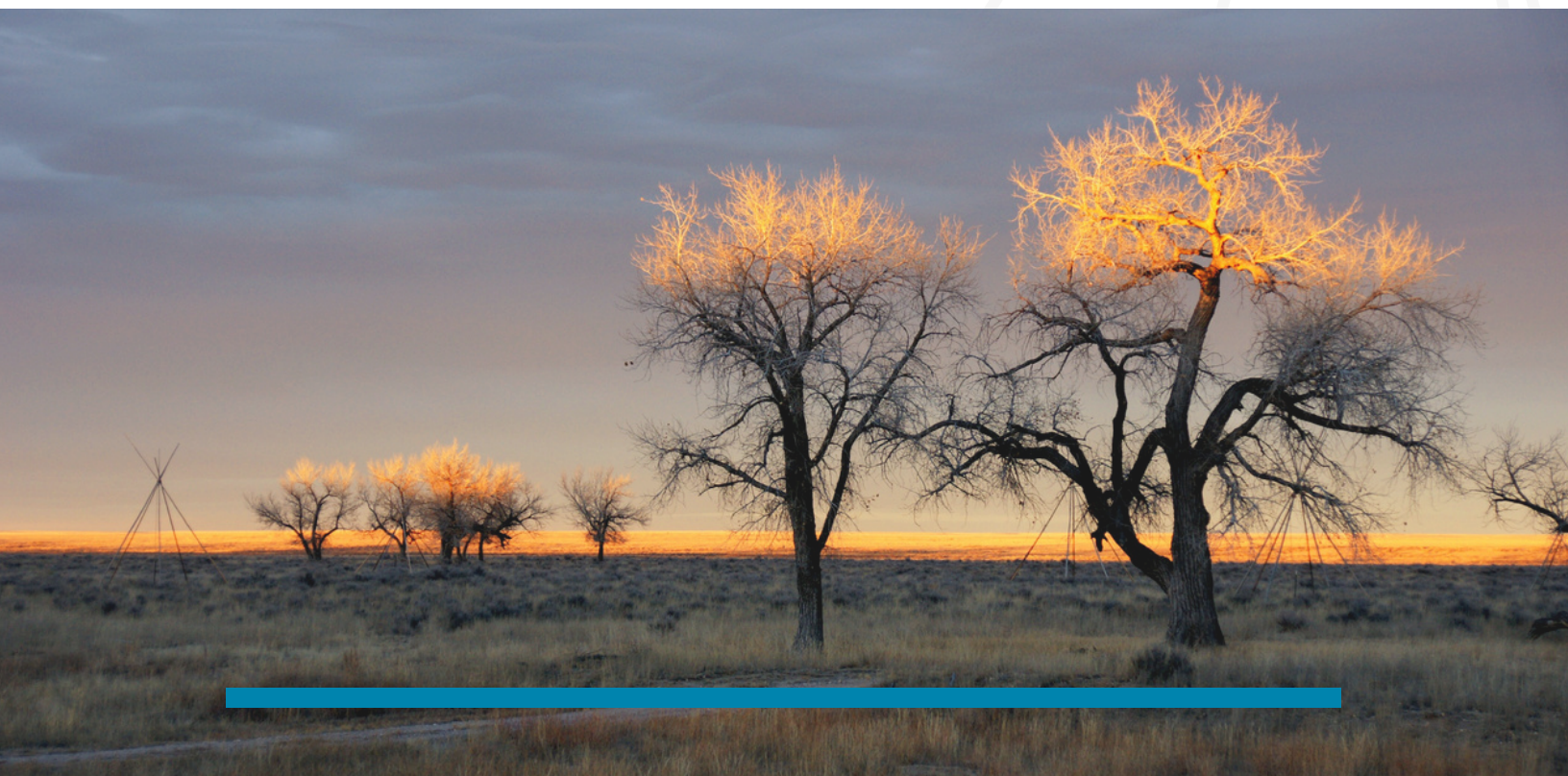
MESSAGE FROM A BOARD MEMBER EMERITUS

The members of the Sand Creek Foundation Board of Directors are pleased to send you a copy of its 2021-22 Annual Report. We believe that the work the Foundation does in concert with the Sand Creek Massacre National Historic Site is critical to creating a more informed public understanding of the ongoing evolution of Indian-white relations in this land we share as a country.

In the 1851 Great Treaty at Horse Creek (Fort Laramie), the Cheyenne and Arapaho retained portions of their traditional homeland that straddled the current four states of Wyoming, Nebraska, Colorado, and Kansas, as well as the eastern front of the Rocky Mountain range. Unfortunately, with the discovery of gold in the Pike's Peak area combined with the philosophy of Manifest Destiny, Colorado Territorial leaders set about extinguishing Indian title in what was to become the State of Colorado. This territorial expansion tragically led to the 1864 Massacre at Sand Creek, a heartbreaking event of Indian-white relations that is part of the history of this great land now called the United States of America.

This past stands as the foundation of our on-going work that respects the Cheyenne and Arapaho nations, whose descendants continue to pay tribute to their ancestors here on what they see as sacred ground.

Henrietta Mann, Ph.D.
Board Member Emeritus



YEAR IN REVIEW

On behalf of the Board of Directors, we are pleased to send you this 2021 Year in Review report. In the following pages we summarize our current financial status, reintroduce ourselves and introduce some of the members of our Board of Advisors, and highlight some of our projects, activities and successes during the past year.

Despite the Board's inability to meet in person due to pandemic restrictions, we met on a recurring basis in order to continue our commitment to the foundation's growth.

In addition to the activities described in more detail throughout this report, we have assisted the Sand Creek Massacre National Historic Site in various ways, including securing a large private collection of invaluable research materials for the Center for Sand Creek Massacre Studies and preparing for one of the park's semi-annual tribal consultation meetings. We also completed a Philanthropic Partnership Agreement for submission to the National Park Service for approval. Besides assistance to the NPS, we aided partner organization Canyons and Plains of Southeast Colorado with a promotional video project sponsored by the Colorado Tourism Office, and continued our own efforts submitting various grant applications, launching an updated website, and more.

We are proud of our progress during the last year, in spite of its challenges. That we are able to report on these accomplishments requires two important acknowledgements: One is to our incomparable Program Director, Matt LeBlanc, who we were fortunate to have join us in January, 2021 as an AmeriCorps VISTA. The extent to which he has helped advance the foundation's development in the last year can not be overstated. Matt will be leaving us in 2022 for new horizons, and though he will be sorely missed, we wish him all the best the future can bring.

The other sincere thanks goes to all of you who have joined the foundation's list of friends and supporters, came on board as esteemed advisors, made generous donations, and kept us energized in pursuing the foundation's mission and purpose. Thank you, thank you for joining us as we continue our growth. With your continued friendship and support, we look forward to an even stronger 2022.

Alysa Roberts

Alysa Roberts

Interim Chairperson, Board of Directors



BOARD OF ADVISORS

In 2021 we successfully recruited and on-boarded a diverse, experienced, and committed 29-member Board of Advisors.

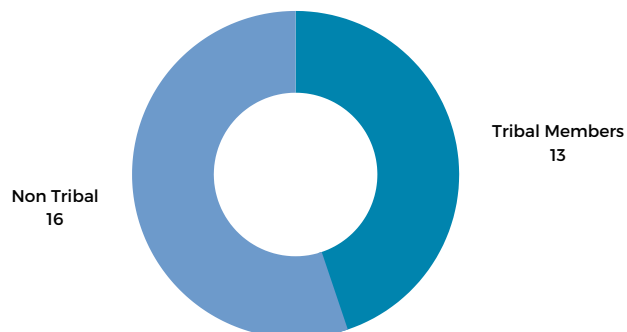
The Advisors support the Foundation with knowledge, guidance, professional and personal networks, and public outreach in the effort to develop the Center for Sand Creek Massacre Studies, educational programming, and Tribal connections.

These Advisors were recommended by peers based on their scholarly and cultural expertise on the Sand Creek Massacre and related subjects.

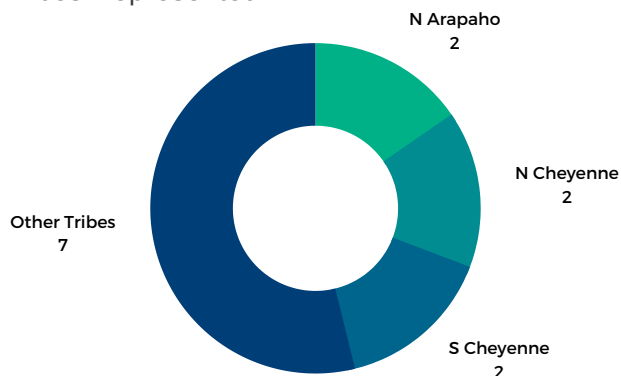
A virtual meeting introducing the Board of Directors and Advisors was held in September and included a welcome from Honorary Chairperson, Sen. Ben Nighthorse Campbell.

Learn more about the Advisors at:
www.sandcreekmassacrefoundation.org/board

Tribal Representation among the Advisors



Tribes Represented



The Board of Advisors represent experience and expertise in the following areas:

- Academic/Education
- Archives/Library Management
- Elder Connection & Outreach
- Formation/Management of NPS Site
- Fundraising/Donor Engagement
- General Historic
- Legal
- Memorialization
- Oral History Documentation
- Politics & Political Engagement
- Press/Media
- Religious/Spiritual
- Social Justice/Genocide
- Youth Connection & Outreach

17%

of the Advisors
are descendants of
individuals present at
the Sand Creek Massacre

ENGAGEMENT & OUTREACH

We continue to seek opportunities to partner with other groups and engage with contemporary issues relevant to our work and the Sand Creek Massacre. This year we supported efforts directly impacting the future of the Historic Site, the historical context in Southeast Colorado, and lent our voice to issues who sought us out for the cultural and historic expertise of our Board of Directors and Advisors. Through our outreach and engagement efforts, our Friends of the Foundation distribution list continues to grow and has added more than 160 people and organizations interested in staying connected to our work.

These are some of the highlights from our engagement efforts this year. You can learn more and read many of our statements at: www.sandcreekmassacrefoundation.org/publications

Amache National Historic Site

Collaborated with the National Park Conservation Association to submit our support to Congress for the Amache National Historic Site Act to include this internment camp as a unit of the NPS.

Santa Fe Trail Bicentennial Symposium

Incorporated a land acknowledgment statement into the symposiums programming. Alexa Roberts from the Board of Directors served on the planning committee.

Byers Branch Library Renaming Effort

Engaged the Denver Public Library in their renaming effort, highlighting Byers' encouragement of the campaign against the tribes on the Colorado plains. The branch was renamed after Thunderbird Man, a Korean war vet and Native American activist.

Director Sams Welcome

Senator Campbell provided a personal welcome to Charles F. "Chuck" Sams III as the first Native American Director of the NPS in its 105-year history.

Howbert Elementary Renaming Effort

Joined the Haseya Advocate Program in calling for the renaming of the elementary school in Colorado Springs citing Howbert's defense of Colonel Chivington in the Sand Creek Massacre.



ENGAGEMENT CONTINUED

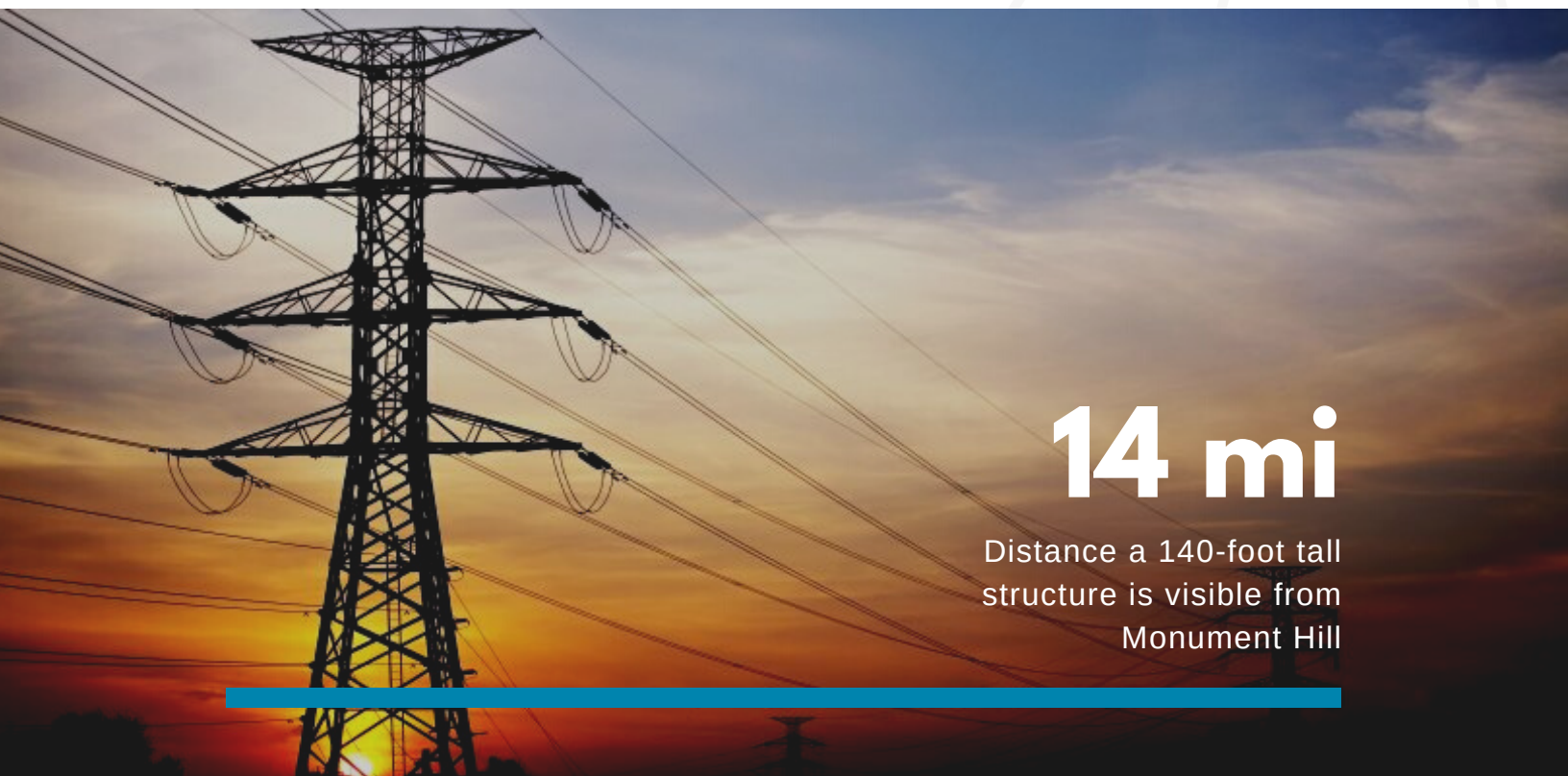
Xcel Energy Transmission Lines

This year Xcel Energy released their preliminary transmission line locations for up to 650 miles of new line across Colorado as part of their Power Pathway program. Some of the preferred routing for these 120 to 190 feet tall transmission lines is as close as 4 miles from the historic site boundary, permanently damaging the scenic and historic integrity of the site for the Cheyenne and Arapaho people and for visitors.

Recognizing the lasting impact this project would have on the site, the Foundation released a call to action to raise alarm and encourage our advisors and friends to submit public comment encouraging alternative routes outside the extensive viewshed of the historic site.

We engaged with the National Historic Site, the National Parks Conservation Association, Tribal members, and other interested parties to bring this issue to light. Through these efforts, Xcel engaged with the Tribes directly and has made changes to the line placement based on feedback from the Tribal Representatives to the park.

As of Winter 2021, Xcel has eliminated many of the originally proposed lines closest to the historic site which fell well within the viewshed. The company has publicly stated that they will continue to seek input from the Tribes in 2022 regarding the revised transmission line routes. The Foundation, and our partners, will continue to engage with this issue as an advocate for the park and those with historical and spiritual connections to the site.



14 mi

Distance a 140-foot tall
structure is visible from
Monument Hill

Sand Creek massacre Foundat
1301 maine St Box 249
Eads, CO 81036

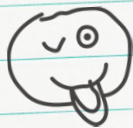
December 10, 2021

My class and I have been learning about the escalation of events that led to that horrific day at Sand creek. We are also learning about the long-lasting effects of the massacre.

I am writing to ask if you have any brochures or information about the work you do at your foundation. We would greatly appreciate any materials you have to offer. There are 24 students in our class including me.

On a personal note, I felt so terrible for the Natives because Chivington was so evil and didn't care for how peaceful the Natives actually were. The Native Americans deserved better. I also thought Black Kettle was a great chief because he made great decisions and cared for his people like the incredible leader he is.

Sincerely,
4th grader



Black



FINANCIAL

In 2021 we received donations from 30 gracious supporters who joined us in expanding the awareness and reach of the Foundation and our important work.

In November, just after the Annual Observance of the Sand Creek Massacre, we engaged our friends and donors in the global Giving Tuesday campaign. Giving Tuesday encourages people and organizations to donate their time and money to charitable causes on the Tuesday following Thanksgiving in the United States.

GI  ING TUESDAY

\$5,056*

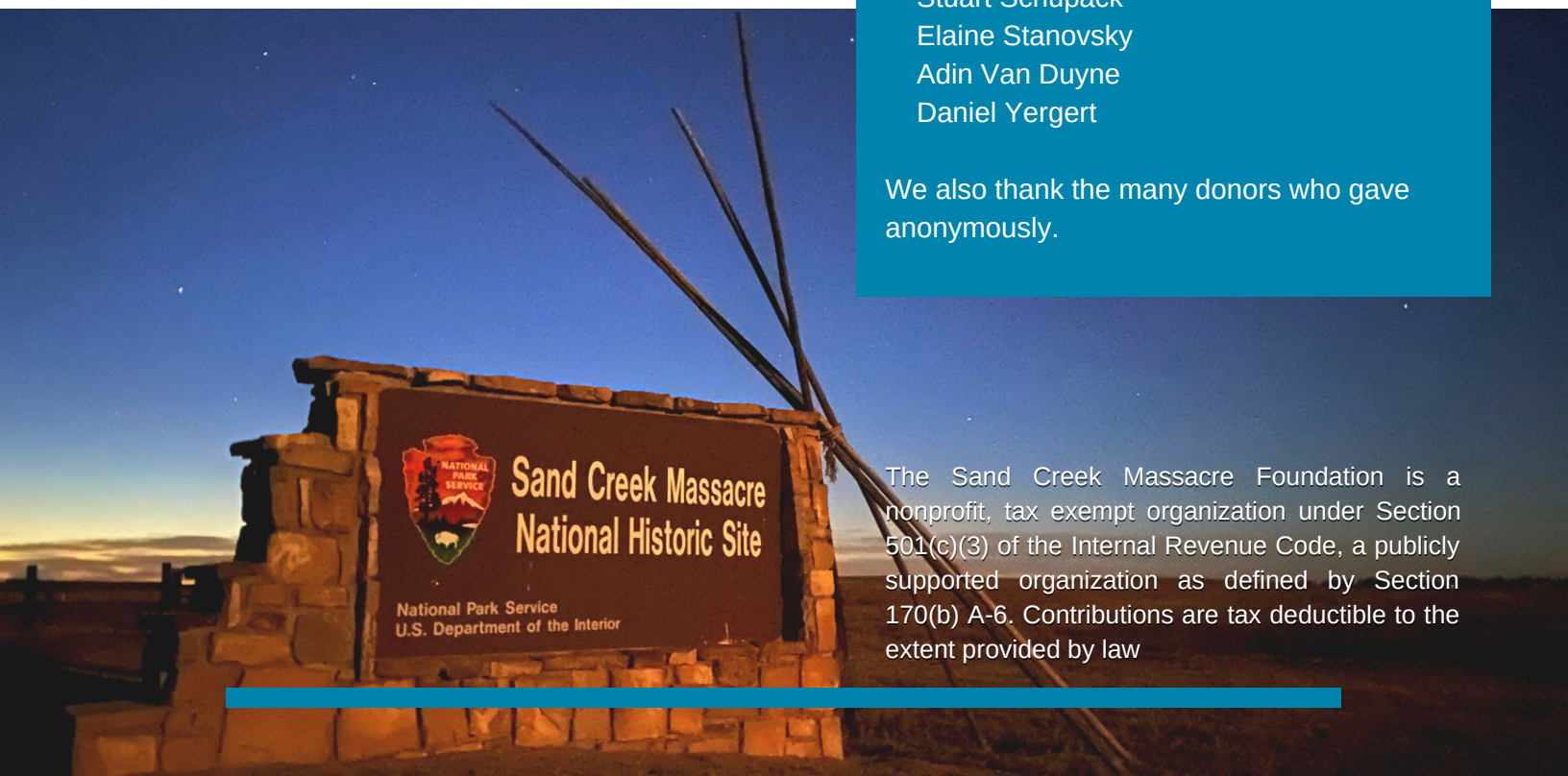
In donations from generous
supporters in 2021

The Sand Creek Massacre Foundation sincerely thanks our 2021 donors for choosing to honor the legacy of those lost, and those we remember, at Sand Creek.

Kelly Degering
Seth Frankel
James Franklin
M Paul Garrett
Loren Ghiglione
Chantalle Hanschu
Sarah Hartzell
Brianna Johnson
David Osterman
Gary Roberts
Jennifer Rutherford
Stuart Schupack
Elaine Stanovsky
Adin Van Duyne
Daniel Yergert

We also thank the many donors who gave anonymously.

The Sand Creek Massacre Foundation is a nonprofit, tax exempt organization under Section 501(c)(3) of the Internal Revenue Code, a publicly supported organization as defined by Section 170(b) A-6. Contributions are tax deductible to the extent provided by law



LEARN REMEMBER HEAL



Sand Creek Massacre Foundation

c/o NPS
PO Box 249
Eads, CO 81036

(720) 515-7835

sandcreekmassacrefoundation.org

PARTNERS



**SAND CREEK MASSACRE
FOUNDATION**